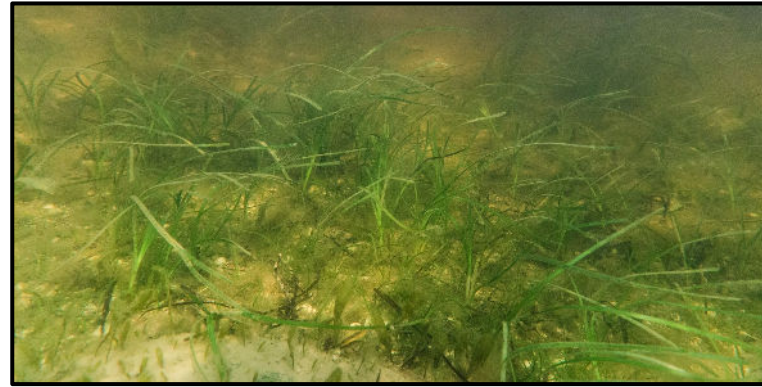


*Waachiyah from the Eelgrass Team and **THANK YOU** for a great summer of research in Eastmain!*

Our main question this summer:

“How is eelgrass recovering around Eastmain?”



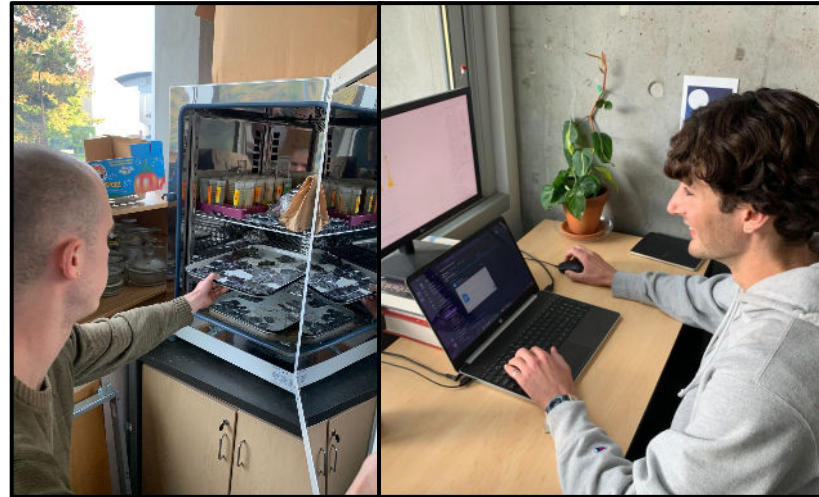
What we did in Eastmain this summer
Monitored the health of 7 eelgrass meadows

What we're doing now in the lab

Processing eelgrass and water samples we collected this summer

Analyzing the data from the monitoring sites

Planning for next year's research



◀ Add us on Facebook!



See where we went! (Storymap) ▶

Thank you to the Cree Nation of Eastmain for hosting us in your building, and thank you Wilfred for contributing to the field research! We look forward to seeing you next summer!

